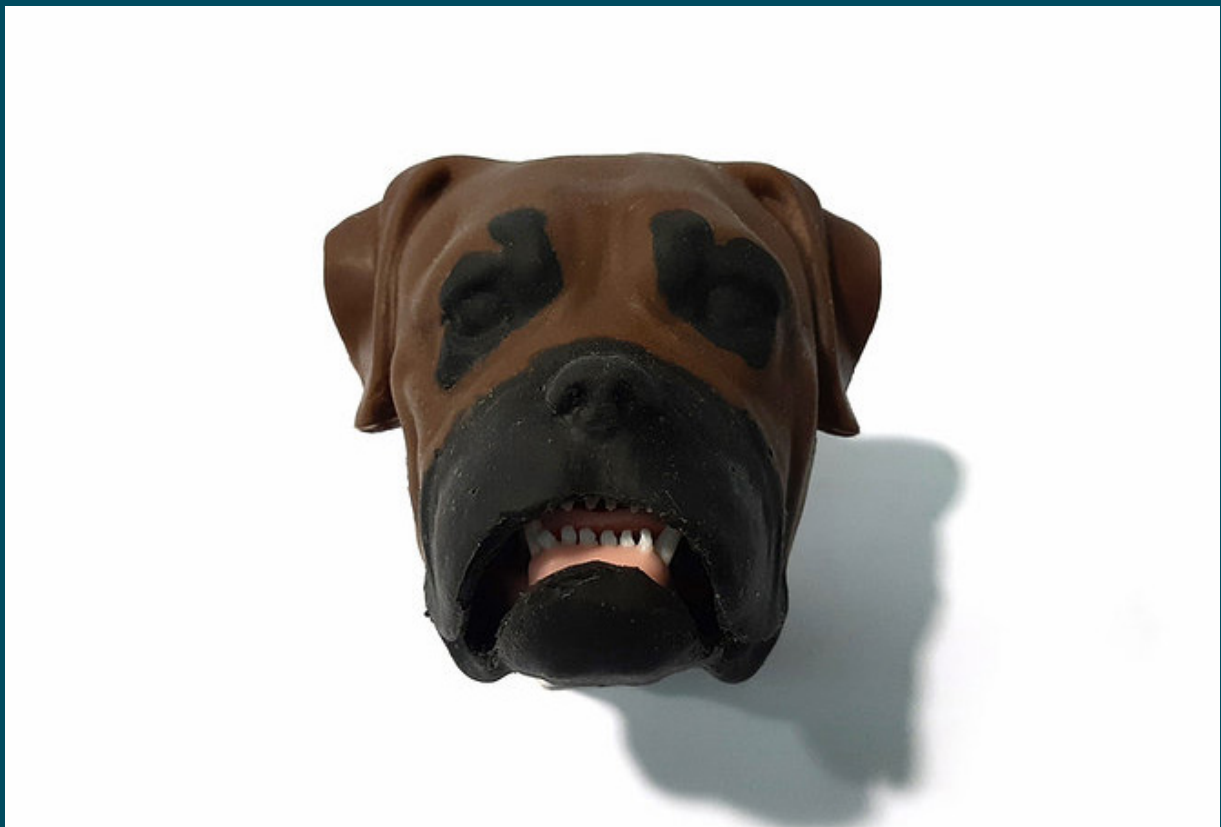


USER MANUAL



Set up and demonstration of the
Brachcephalic Dog



Brachycephalic Dog

Revision A: Brachycephalic Dog User manual	Product SKU: C200-000	Last Updated: 30 August 2023
--	--------------------------	---------------------------------



Parts List

Equipment Required:

- Holsim Brachycephalic Dog Model
- Laryngoscope
- Intubation Tubes (6-8mm)
- Lubricant
- Other Necessary Procedural Equipment
- Holsim Desk Stand (Optional)

You will need:

- Dish Detergent
- Paper Towels
- Air Tight Box



The Part



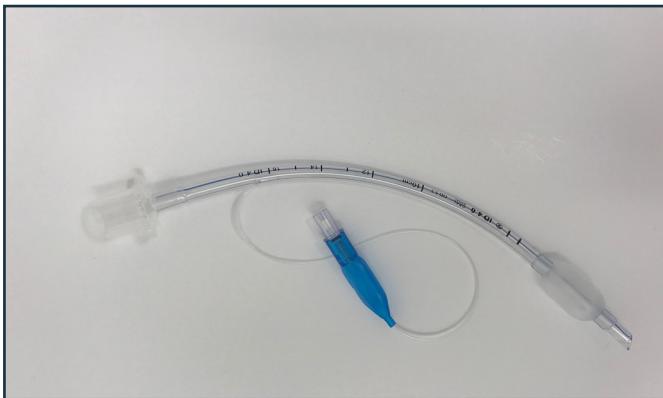


The Set up



1 PLACE MODEL ON TABLE

- Place your Brachycephalic Dog model on a desk or table.
- Preferably, you can mount the head to our Holsim Desk Stand using the threaded inserts on the back neck plate.



2 PREP INTUBATION TUBES

- Prepare your intubation tubes and lubricate them well.
- We recommend using a 6mm diameter tube, but you may want to have a couple of different sizes available.



3 PREP PROCEDURAL EQUIPMENT

- Prepare a laryngoscope and any other procedural equipment you may need.



The Procedure



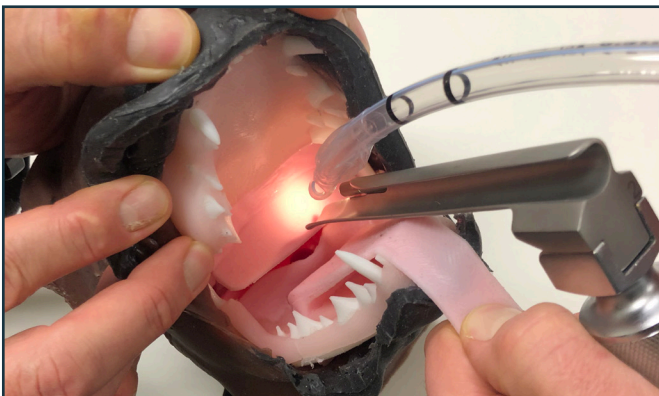
1 PULL TONGUE OUT OF MOUTH

- Hold the tip of the tongue with your dominant hand and pull it forward gently out of the mouth.
- Secure with your non-dominant hand and thumb.



2 INSERT LARYNGOSCOPE

- Holding the laryngoscope in your dominant hand, place the tip of it on the back of the tongue, cranial to the base of the epiglottis.
- Once in position, transfer to your non-dominant hand.

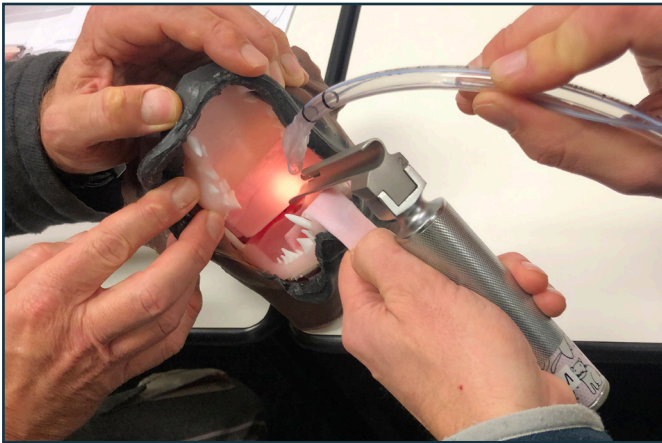


3 INSERT TUBE

- Pick up the appropriate tube with your dominant hand and push the tube gently into the dog's mouth towards the back of the tongue. Push gently onto the epiglottis to expose the entrance to the trachea and oesophagus.
- Guide the tip of the tube over the dorsal surface of the epiglottis and gently slide it forward into the trachea. It sometime helps to rotate the tube a little as it enters.



The Pack up



1

REMOVE TUBE

- Once the procedure has finished, remove the tubes and any other equipment from the dog's mouth as instructed by your tutor.



2

RINSE MOUTH

- Wash out the inside of the Brachycephalic Dog model mouth using warm water and dish detergent to remove any excess lubricant from the tubes.



3

DRY MODEL

- Pat the model dry with a paper towel to remove any excess water and moisture.



4

PACK MODEL AWAY

- Once clean and dry, pack the model away in an airtight container to keep the model free from dust and dirt.
- Ensure to keep it out of direct sunlight.



Holsim

34D Somerset Street,  07 839 5018
Hamilton, New Zealand  info@holsim.co.nz